



### Applications

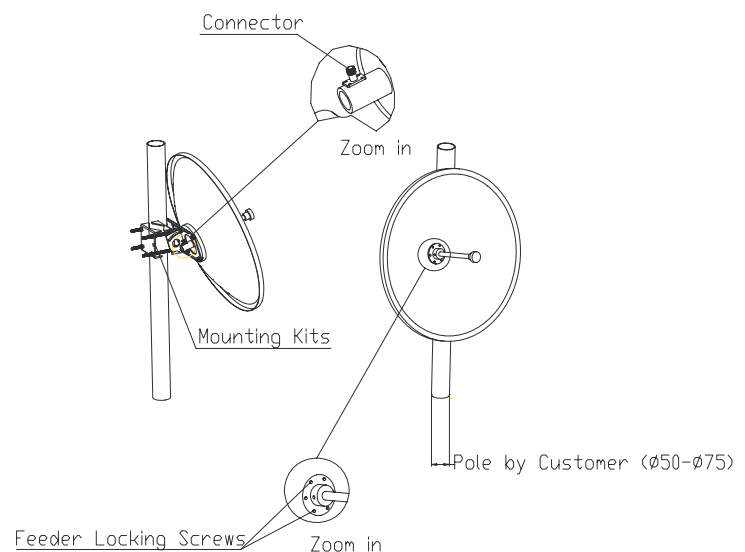
- Microwave Relay Station
- Wireless bridge
- LMDS system

### Features

- High Gain, High F\B Ratio
- High Precise Parabolic Dish
- UV-Coated Aluminium Alloy
- V/H Polarization is Compatible
- Standard Mounting Kit

### Technical Sheet

Model	D5000P29A60
Freq. Range	4900to5850 MHz
Gain	29 dBi
Ver. Beamwidth	8
Hor. Beamwidth	7
F/B Ratio	$\geq 35$ dB
VSWR	$\leq 1.5$
Impedance	50 $\Omega$
Polarization	Vertical or Horizontal
Max. Power	200 W
Connector	N -Female
Dimension	$\Phi 0.6$ m
Weight-Kg	5.5
Mast Diameter	$\Phi 50-75$ mm
Mechanical tilt	15
Azimuth tilt	90



### Installation:

1. Fixing mounting kits and feeder to parabolic dish, notice the polarization mark.
2. Installing assistant bracket, then install antenna above the assistant bracket, not fixing screws of the mounting kits.
3. To make the received signal maximum by adjusting antenna's azimuth and elevation, then fix screws of the mounting kits and move the assistant bracket to the illustrated place.
4. Antenna's polarization can be adjusted by rotating the feeder. When the connector is vertical, antenna works at vertical polarization mode, otherwise at horizontal polarization mode.