



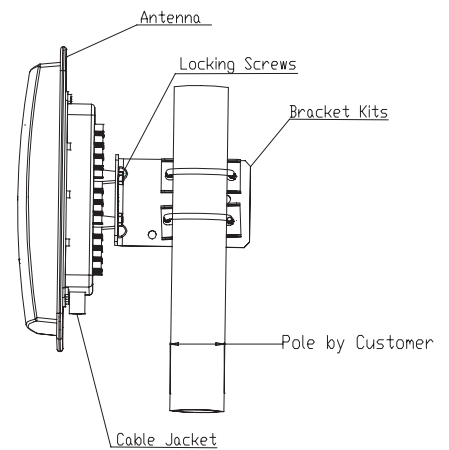
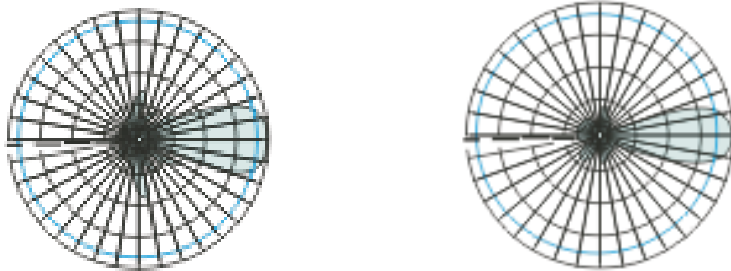
2.4GHz 17dBi Wireless bridge antenna

Specifications

Model No:	GHD2400V1720
Freq. Range-MHZ	2400 to 2500
Gain-dBi	17
Beamwidth-°	E:23 H:23
VSWR	≤1.5
F/B Ratio-dB	≥25
Impedance-Ω	50
Polarization	Vertical or Horizontal
Max Power-W	50
Connector Type	SMA Male or Customized
Antenna Size-mm	257x257x47
Weight-Kg	2
Pole Diameter-mm	Φ 40 to 50



Installation Sketch



 ANTENNA (HK) CO., LTD
GUAGUANHUA Communication Equipment FTY.

Web: <http://www.ghantenna.com>

Tel: +86-757-87676081

Fax: +86-757-87676091